

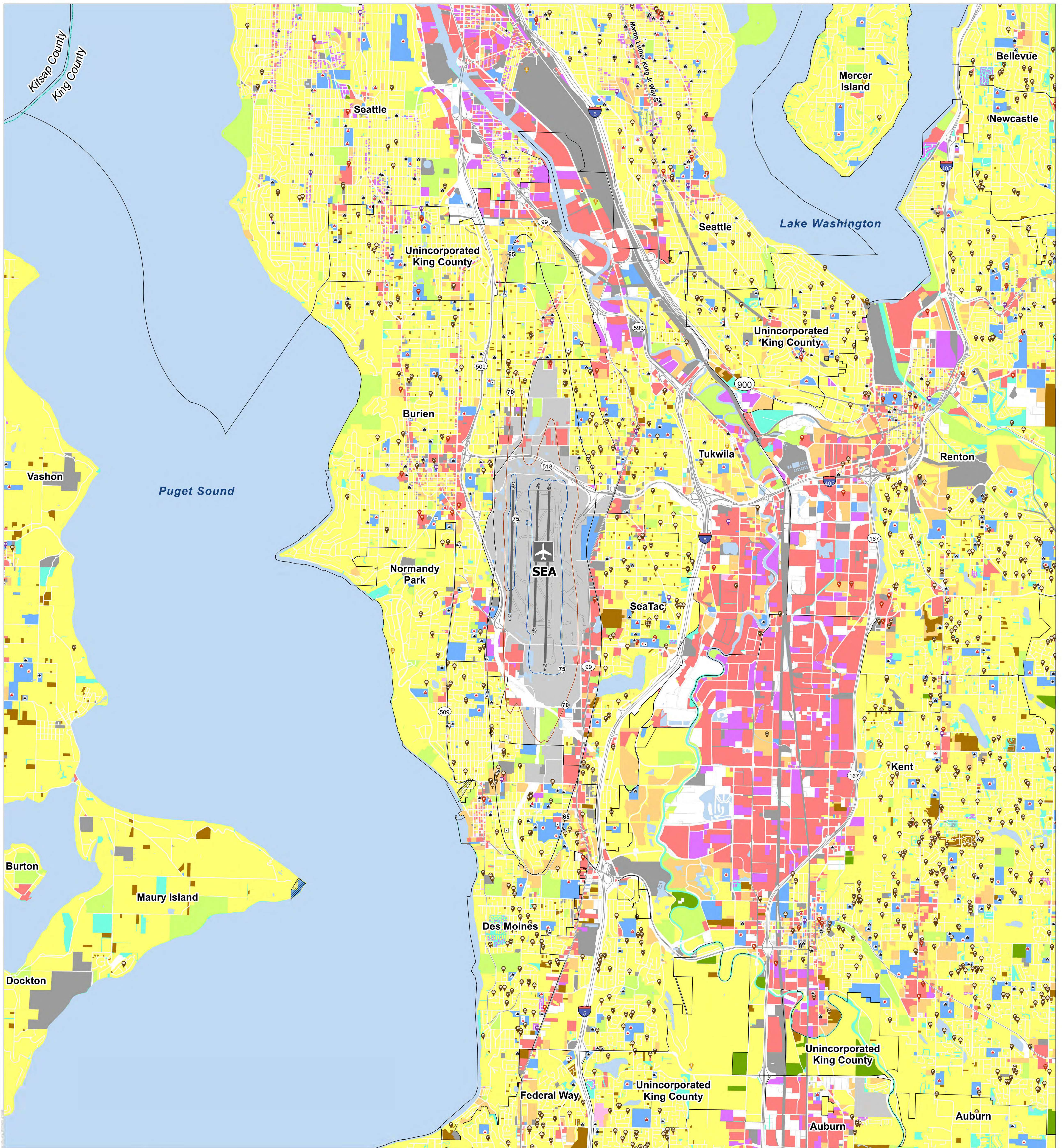
# Appendix H.

## Official Noise Exposure Maps

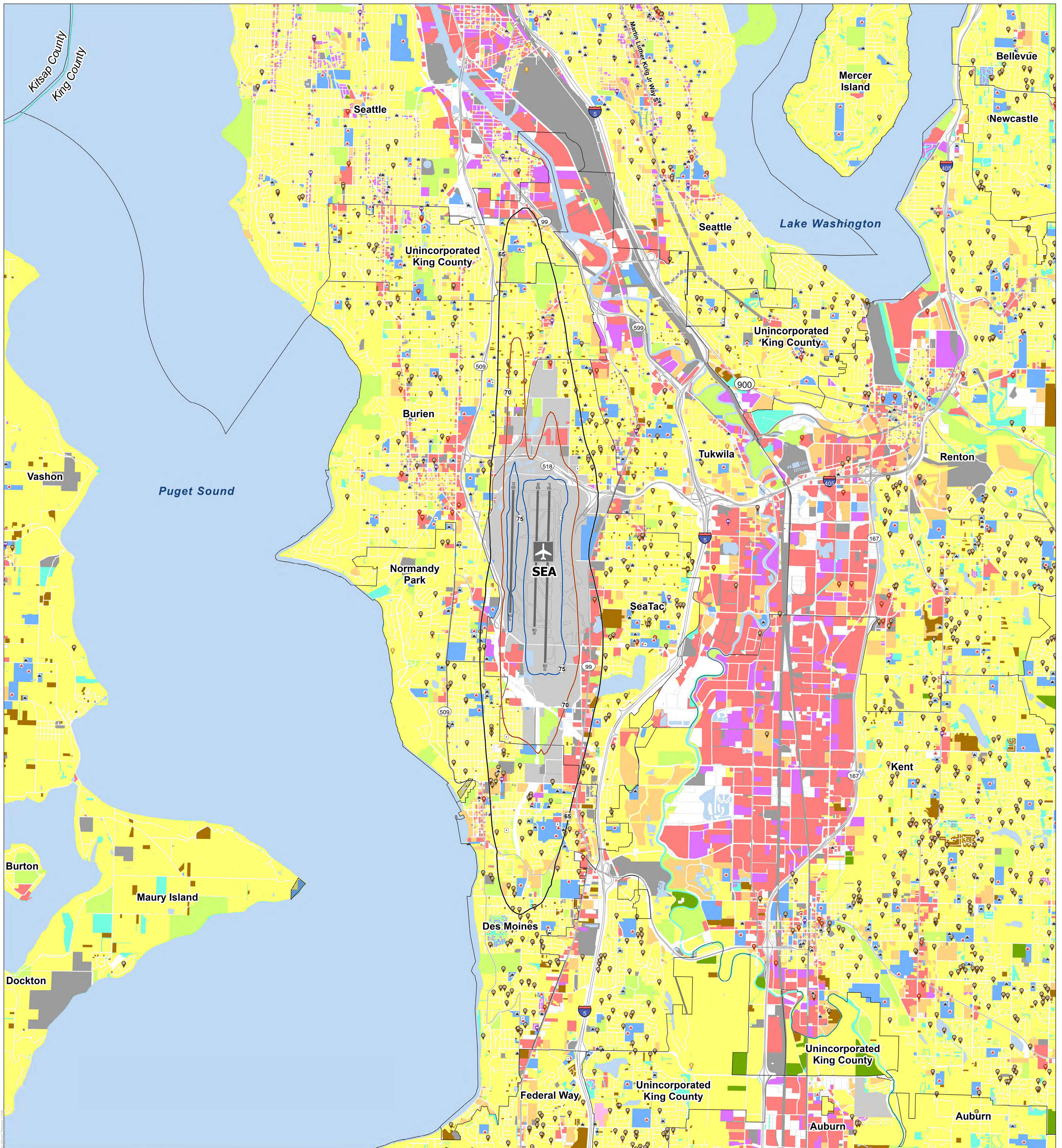
This Appendix contains the official Noise Exposure Maps (NEMs) developed as a part of the Seattle-Tacoma International Airport (SEA) Part 150 Study. This Appendix also includes the Aviation Environmental Design Tool (AEDT) flight tracks used in modeling. The AEDT flight tracks include a central “backbone” flight track that is combined with subtracks to depict the dispersion of arrivals and departures at SEA. These flight tracks are used in AEDT to generate the 2022 Existing Conditions and 2032 Future Conditions NEMs. Items included are listed below.

- Appendix H-1: 2022 Existing Conditions Noise Exposure Map
- Appendix H-2: 2032 Future Conditions Noise Exposure Map
- Appendix H-3: North Flow Model Flight Tracks
- Appendix H-4: South Flow Model Flight Tracks

# **H-1 2022 Existing Conditions Noise Exposure Map**

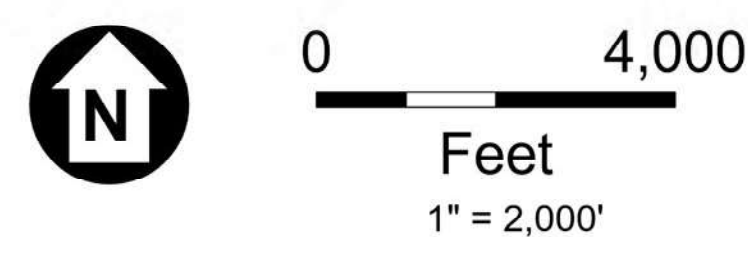


# **H-2 2032 Future Conditions Noise Exposure Map**



**SEA** Seattle-Tacoma International Airport  
Operated by the Port of Seattle

- |  |  |  |
|--|--|--|
| <p><b>Legend</b></p> <ul style="list-style-type: none"> <li>County Boundary</li> <li>Jurisdiction Boundary</li> <li>SEA Permanent Noise Monitor</li> </ul> <p><b>2032 DNL Contours</b></p> <ul style="list-style-type: none"> <li>65 dB</li> <li>70 dB</li> <li>75 dB</li> </ul> | <p><b>Generalized Land Uses</b></p> <ul style="list-style-type: none"> <li>Residential - Single Family</li> <li>Residential - Multi-Family</li> <li>Residential - Mobile Home</li> <li>Residential - Mixed-Use</li> <li>Commercial</li> <li>Industrial/Manufacturing</li> <li>Parks, Recreation, Open Space</li> <li>Public Facilities/Institutions</li> <li>SEA and Port of Seattle Land</li> <li>Transportation/Utilities</li> <li>Unclassified</li> <li>Vacant</li> </ul> | <ul style="list-style-type: none"> <li>Library, University, or Educational Facility</li> <li>School, University, or Educational Facility</li> <li>Hospital or Medical Center</li> <li>Long-Term Residential Care/Nursing Home</li> <li>Place of Worship</li> <li>Historic Resource</li> <li>Historic District</li> </ul> |
|--|--|--|



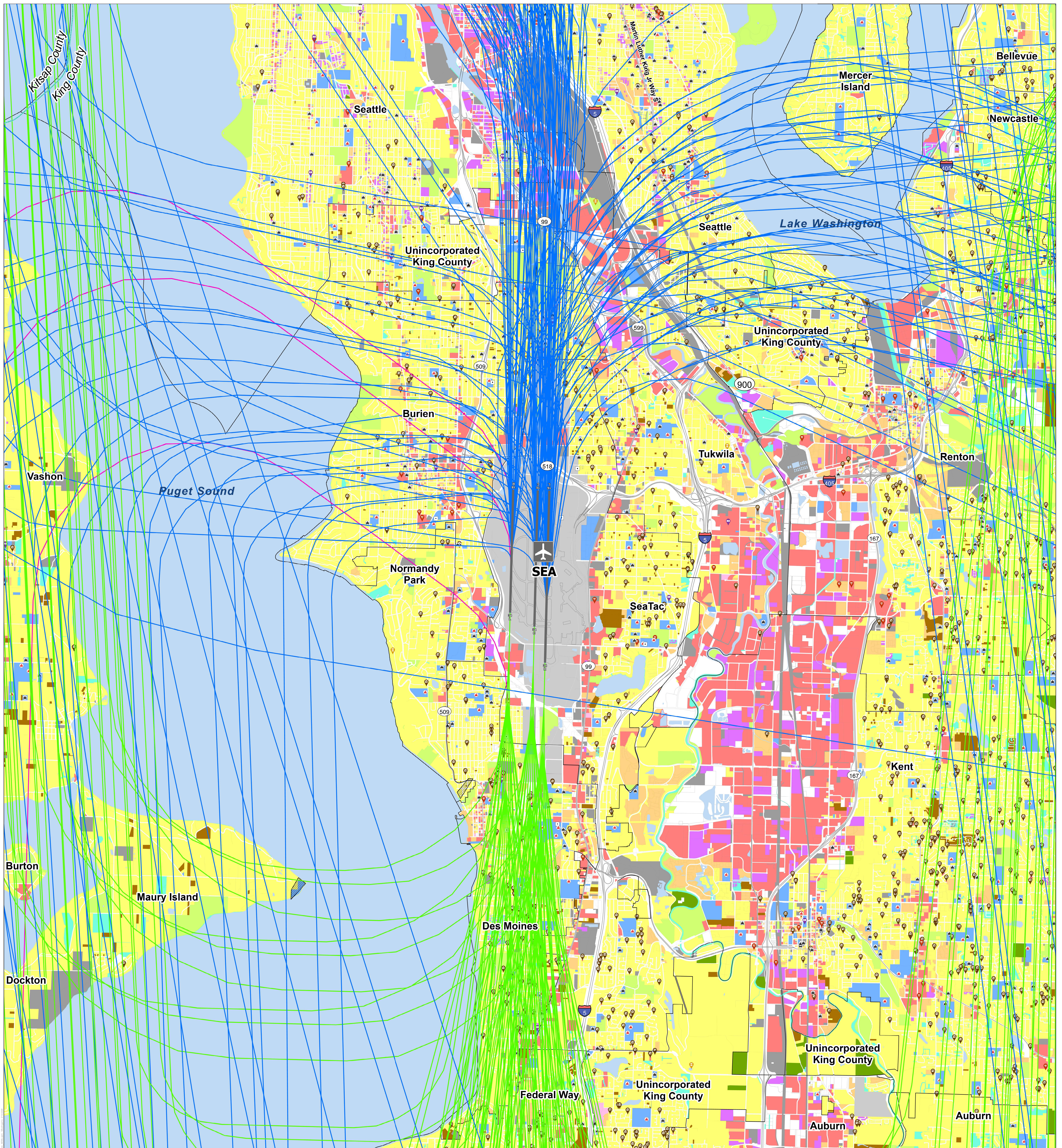
**Sponsor's Certification**  
The Port of Seattle certifies that it has afforded interested persons adequate opportunity to submit their views, data, and comments concerning the correctness and adequacy of the Seattle-Tacoma International Airport 2032 Noise Exposure Map and descriptions of forecast aircraft operations. The 2032 operations at Seattle-Tacoma International Airport are hereby certified to be consistent with fleet mix, forecast operational levels, and flight procedures depicted on this 2032 Noise Exposure Map.

**Sarah Cox**  
By: Sarah Cox  
Title: Director, Aviation Environment & Sustainability  
Address: 17801 International Blvd, Seattle, WA 98158  
Signature: *Sarah Cox* Date: 06/29/26

**Figure H-2**  
**2032 Future Conditions**  
**Noise Exposure Map**  
Map 2 of 4  
Seattle-Tacoma International Airport

SOURCE: SAMP NTP NEPA EA, 2024; State of Washington Geospatial, 2024; King County GIS Center, 2024; King County Assessor, 2024; USGS WA Transportation; Adapted by ESA, 2025; SEA, 2025; ESA, 2025.

# **H-3 North Flow Model Flight Tracks**



# **H-4 South Flow Model Flight Tracks**

