

## Welcome to the Seattle-Tacoma International Airport (SEA) Public Workshop for the Part 150 Noise Study

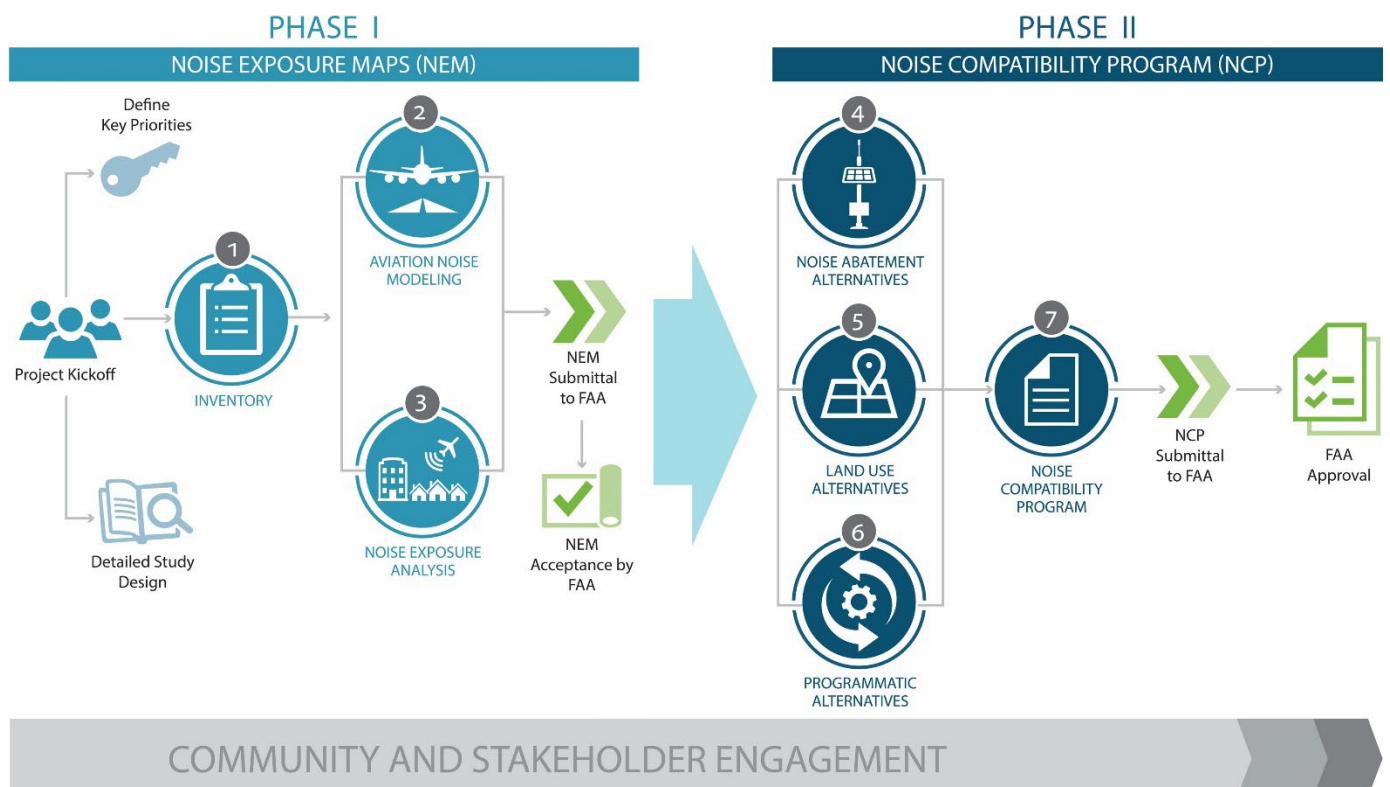
The Port of Seattle (Port) welcomes and thanks you for attending this public workshop for the Part 150 Noise Study for Seattle-Tacoma International Airport (SEA).

The Port recently began a study to improve the compatibility of SEA with the surrounding communities. This study, known as a “Part 150 Study,” will follow the process outlined in Title 14 of the Code of Federal Regulations (CFR) Part 150, *Airport Noise Compatibility Planning*. This is SEA’s fourth Part 150 study update, with the most recent Study completed in 2014.

### Introduction to Part 150

The Federal Aviation Administration (FAA) issued 14 CFR Part 150 in 1985 and it provides airports with a formal process for addressing airport noise and noncompatible land uses. A “noncompatible land use” is land exposed to aircraft noise above the established Federal threshold for impacts. Part 150 Studies are voluntary and typically prepared by airports interested in improving land use compatibility for local communities. Part 150 Studies have two phases. The Noise Exposure Map (NEM) Report shows existing and future aircraft sound exposure levels. The Noise Compatibility Program (NCP) recommends measures to address aircraft noise.

This Study is expected to take approximately three (3) years, with study completion and FAA approval of the NCP anticipated in 2027.



## Public Workshop Format

This workshop is an “open house” format and there will be no formal presentation. This will provide attendees with the maximum opportunity for one-on-one interaction and sharing of information and concerns. There are boards located throughout the room about the Part 150 Study process, project schedule, an introduction to noise, and information about modeling aircraft noise exposure.

The boards are organized into six stations, which guide you through the components of a Part 150 Study. We encourage you to visit each station and review the materials provided. Members of the Study Team are available to answer any questions you have. The boards and handout will be available at [www.seapart150.com](http://www.seapart150.com) – this website will also be updated throughout the project.



**Station 1: The Part 150 Study Process** will guide you through the study process dictated by 14 CFR Part 150, the federal regulation that established the methodology to be followed when evaluating aircraft noise exposure on the surrounding communities as well as developing a program to ensure the compatibility of surrounding land uses with the anticipated noise exposure.

**Station 2: Understanding Noise and Land Use Compatibility** explains the science behind acoustics (sound) and the metrics used in a Part 150 Study. It also provides information regarding noise sensitive land uses and sites in the vicinity of SEA.

**Station 3: Noise Modeling** provides a brief introduction to the noise modeling process used in Part 150 studies including the data required for modeling and the data collection process.

**Station 4: Stakeholder Outreach** discusses the stakeholder outreach program designed to engage local officials, cities, agencies, tenants, and the public in the Part 150 Study process. Everyone’s involvement is essential to the success of the overall study.

**Station 5: SEA Overview** provides a general overview of SEA as well as data and statistics regarding the operational history and growth of the Airport. This data is required to accurately model the Noise Exposure Maps in accordance with the Part 150 regulation.

**Station 6: Non-Part 150 Content** includes other projects that are separate from the Part 150 Study that the community may be interested in discussing with Port staff. Boards include an overview of the SEA Sustainable Airport Master Plan (SAMP) as well as information regarding the current Sound Insulation Program and upcoming Sound Insulation Repair and Replacement Pilot Program Assessment. It is important to note that the Part 150 Noise Study and SAMP are separate efforts and will each have their own distinct public process and outcomes.

## How to Submit Comments

We welcome your feedback and encourage you to express your concerns and share your ideas about noise generated by aircraft operating at SEA. Feedback received will be considered throughout the development of the Study. You may provide written comments during this Public Workshop via the available comment forms, or you can submit comments to [P150@portseattle.org](mailto:P150@portseattle.org) or by mail to:

Aviation Noise Programs, C/O SEA Part 150 Study  
17801 International Blvd., Suite #6012M  
Seattle, WA 98158-12025